

## Paragliding on La Palma

Current information and rules following the volcanic eruption of Tajogaite in 2021.

As a result of the volcanic eruption, the airspace over Puerto Naos was closed until 1 July 2024. The NOTAM is now deleted as of 5.7.2024. Please consult the current NOTAM at <https://insigniavfr.enaire.es/> before flying.

An exclusion zone has been established on the ground over the volcano and the new lava fields. It is forbidden to land in these areas. You can find up-to-date information via [burnair.cloud](https://burnair.cloud).

The paragliding school no longer offers the GuideService. The daily weather briefings published on the Internet have been cancelled. La Palma now means "back to the roots". The pilots have to brief themselves.

### GENERAL INFORMATION

#### Westside:

The Westside is the best-known area for flying, where international competitions are also held. It is the dryer side and often in lee. The Westside is also known for good flying conditions and thermal developments, often lasting the whole day. The situation in lee requires special attention and meteorological knowledge. NB: Wind strengths may increase rapidly resulting in dangerous conditions! It's always a good idea to talk with the local pilots or book the ParaGuide Service (temporarily unavailable).

#### Eastside:

Dominated by the CTR of La Palma, the eastside is a good alternative with calmer eastern winds, especially in the morning before the sun heats up. Well-known take-off is at the "Pico de las Nieves".

### INFORMATION AND RULES

Paragliding in Spain requires a valid pilot licence and insurance; it is obligatory to fly with an approved emergency parachute and wearing a helmet.

Please respect traffic rules during flight and landing! The international rules are also valid here: if you have the cliff on the right, you have right of way.

The special conditions at the emergency landing site in El Remo require an approach depending on wind direction. The circuit should be flown high, reducing a rest of excessive height by flying 8s only before turning into the final approach. Consult graph. New: a mast with a basketball hoop has been installed on the seaward side of the windsocks.

**Before launching** you should check the conditions at the landing site (e.g. by walkie-talkie). Pay attention to the appearance of the sea: if the waves are big or you see white crests, do not launch, or land immediately if you are already in the air.

Please take care of the launch and landing sites. Most take offs are in natural protected areas. Take your rubbish away with you, also cigarette stubs!

Flying from, in and over the "**Caldera de Taburiente**" is prohibited (GCR-148: new SFC up to FL180)! In the nature reserve "**Cumbre Vieja**" launching is only allowed at the official launch sites! In order not to jeopardise our activities, please respect these rules!

Overflying of the new lava fields as well as the new volcan is prohibited. Consult the latest NOTAM.

### IMPORTANT TELEPHONE NUMBERS:

All emergencies, Police, Guardia Civil: 112(multilingual)

Javier López Redondo +34 610 695 750

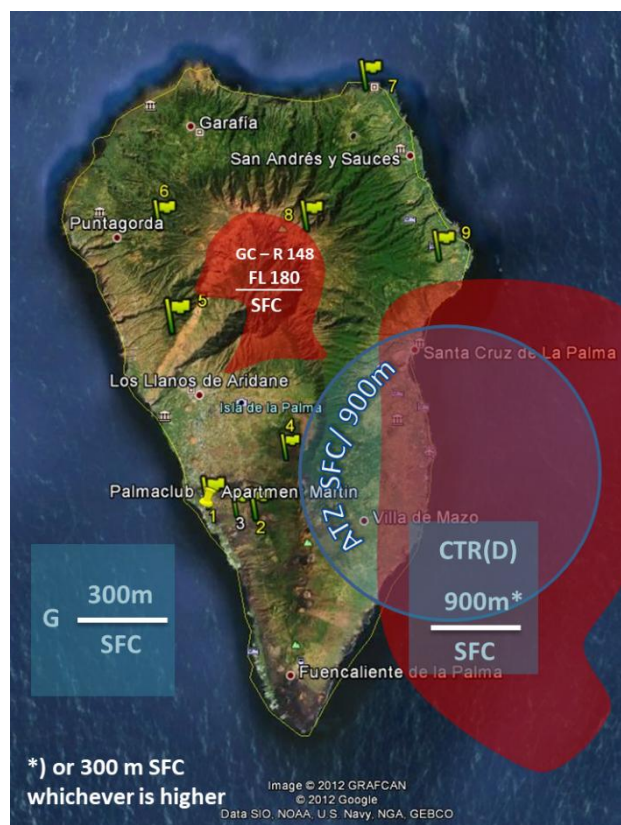
Walkie-Talkie frequencies of Palmaclub:

PMR Channel 5/15: 446.05625 MHz / CTCSS 110.9 MHz

Live wind information: [www.wunderground.com](http://www.wunderground.com)

Weather-Station Puerto Naos: ILOSL12, Tacande (El Paso) IELPAS5

Both weather stations and many more are available since May 2024 via burnair.cloud and correspondingly equipped variometers such as Skytraxx 5.



## Airspace restrictions

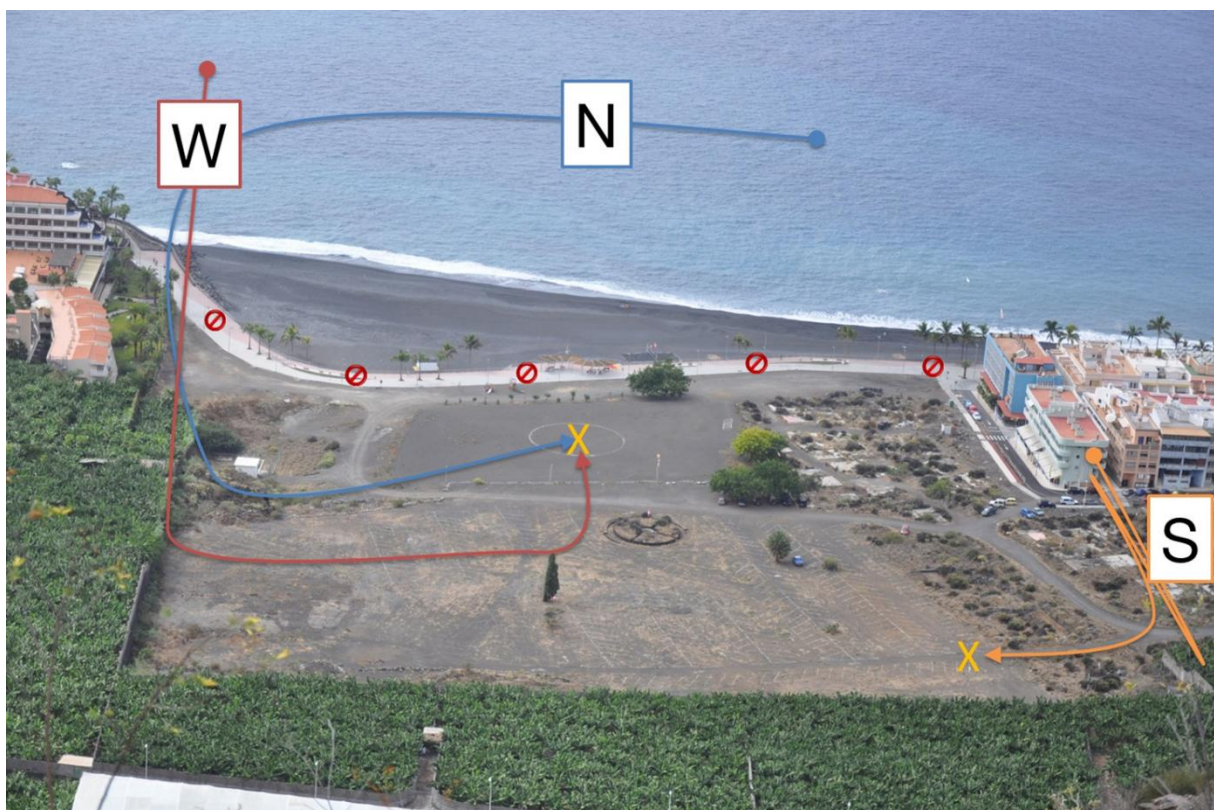
There are at least 3 restricted areas on La Palm, the CTR of the airport with its ATZ, the national park Caldera de Taburiente. Check NOTAM before flying.

## Landing Information Puerto Naos

East of the beach promenade on the sports field. Turn left! Caution: Thermal separation possible when landing. Allow for space. In southerly winds, land in the car park at a large distance from the wall in front.

- Landing on the beach and on the beach promenade is not permitted. Please do not walk on the promenade with an open paraglider!
- Fold the paraglider on the beach promenade, entrance opening towards the sea, without obstructing the passage for pedestrians. A passage of at least 4 metres should be kept clear.

Puerto Naos is monitored around the clock with around 1,000 CO<sub>2</sub> sensors. The area around Playa Chica is still a restricted zone. Only stay in authorised areas and follow the instructions of security staff.



## Landing Information El Remo

As landing in Puerto Naos is again possible, you should only land in El Remo in emergencies. There is a small gravel strip that forms a beach path where we can land. The site is **only suitable for experienced pilots** and although requested, has not yet been officially approved. New: a mast with a basketball hoop has been installed on the seaward side of the windsocks. **Please look at the situation carefully before flying.** Also watch out for possible pedestrians!

Care should be taken at all times to ensure that **only one pilot lands at a time**. Flying off the cliff in time signals to the other pilots that this pilot is landing.

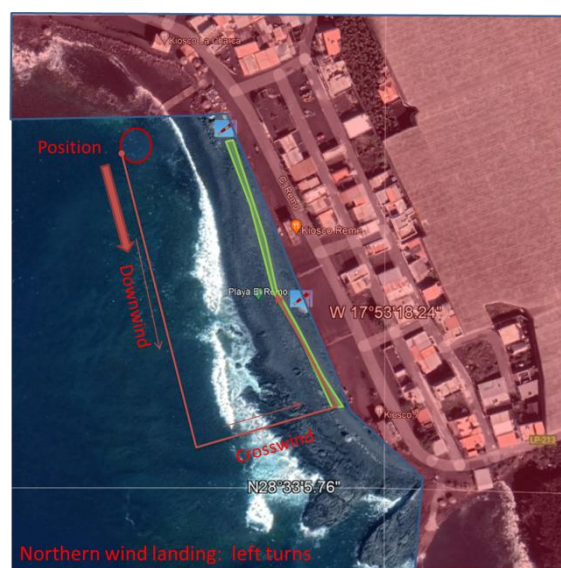
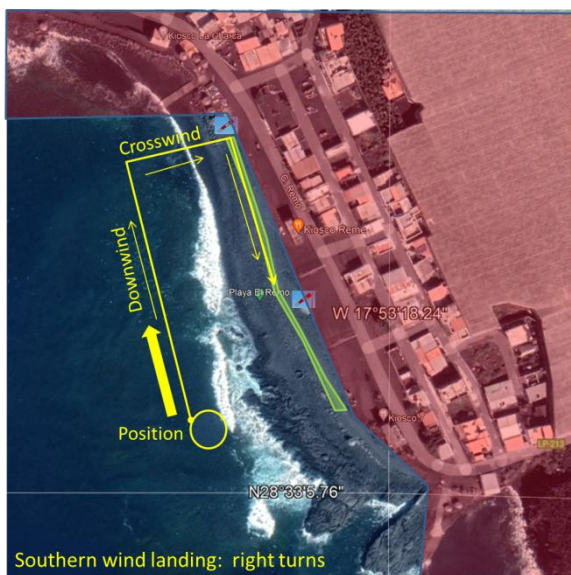
If more than one pilot is on approach, rules must be followed: Landing turn is right turn in south wind and left turn in north wind.

If more than one pilot is at the same altitude, they shall separate by agreement.

In an emergency: If two pilots are still at the same altitude, the pilot in front flies the crosswind in the middle of the strip and the pilot behind at the beginning.

Walkie talkie frequency is PMR 5/15 (446.05625 MHz and CTCSS Tx and Rx 110.9 Hz).

Pilots landed shall keep the radio on and help to inform pedestrians if colleagues are on the approach.





### GENERAL TAKE OFF INFORMATION

#### **Use Alternative Landing Sites:**

**Visit them before flying!**

**El Remo** W 17.888940N 28.552584

Consult graphs and special instructions.

**In the cliff above El Remo, a poorly visible high-voltage line runs from the mast on the cliff down to El Remo.**

**Charco Verde** W 17.898844 N 28.572596  
(Landing in the little bay)  
Do not use with wind speed >10 kn

Please note that those two alternative landing sites are not suitable for beginners.

#### **Start Nº 1: Puerto Naos W 17,902177 N 28,586762**

- 240m. W-SW. Caution: Turbulence in southerly and northerly winds. We do not recommend flying from 20 km/h sideways wind. Car park above the launch site. Please do not drive directly down to the launch site by car! Ask for a permission in the paragliding school before flying.

#### **Start Nº 2: Campanarios W 17,869102 N 28,580566**

Private cars must be parked at the before dirt road starts.  
Walk ~ 30 mins from there.

- 800/900 m. SW-NW Landing in Puerto Naos. Alternative landing site in El Remo or Charco Verde.

#### **Start Nº 3: Jedey W 17,883048 N 28,582477**

- 650m. SW. W. Rarely used and might be overgrown.

#### **Start Nº 4: El Gallo (1300-er) W 17,848952 N 28,6165694**

**Temporarily closed due to airspace restrictions after volcano eruption.**

The take-off is in the restricted area.

**Start Nº 5: Fire Tower El Time W 17,925362 N 28,691611**

- 1100m. NW. Turbulence with south and eastern winds. Strong thermals during the day from the high SE cliff. Landing site at the beach of Tzacorte. Attention, strong winds may blow out of the caldera.

**Start Nº 6: Puntagorda W 17,933593 N 28,7524074**

- 1600m. WNW. Landing aside the Helicopter landing (W -17,994432; N 28,7799857). Flight must be authorized by the mayor. Attention: minimum glide ratio of 7+ without wind.

**Start Nº 7: Barlovento Costa W 17,793707 N 28,8385596**

- 250m. N-NO. Landing „Fajana de Barlovento“ 10m, (W -17,788627 N 28,8430799). Attention, changing winds. Minimum glide ratio of 1:3 without wind.

**Start Nº 8: Cumbre San Andres y Sauces W 17,834105 N 28,7512347**

- 2.140m. N – NE. Attention: forming of lower clouds is already in the early morning possible. Wind direction and intensity may change below the inversion. Take off with low inclination. Landing site Puerto Espindola 10m, (W -17.763525 N 28.811293). Glide ratio 1:5 without wind.

**Start Nº 9: Puntallana W -17.743856 N 28.745871**

- 430m. N, NE, E. only top-landing possible. The former communicated landing site is not available until further notice.

**Always happy landing!**

Link to actual NOTAM: please select NOTAM in the bar on the left in order to have it displayed.

<https://insigniavfr.enaire.es/>

